

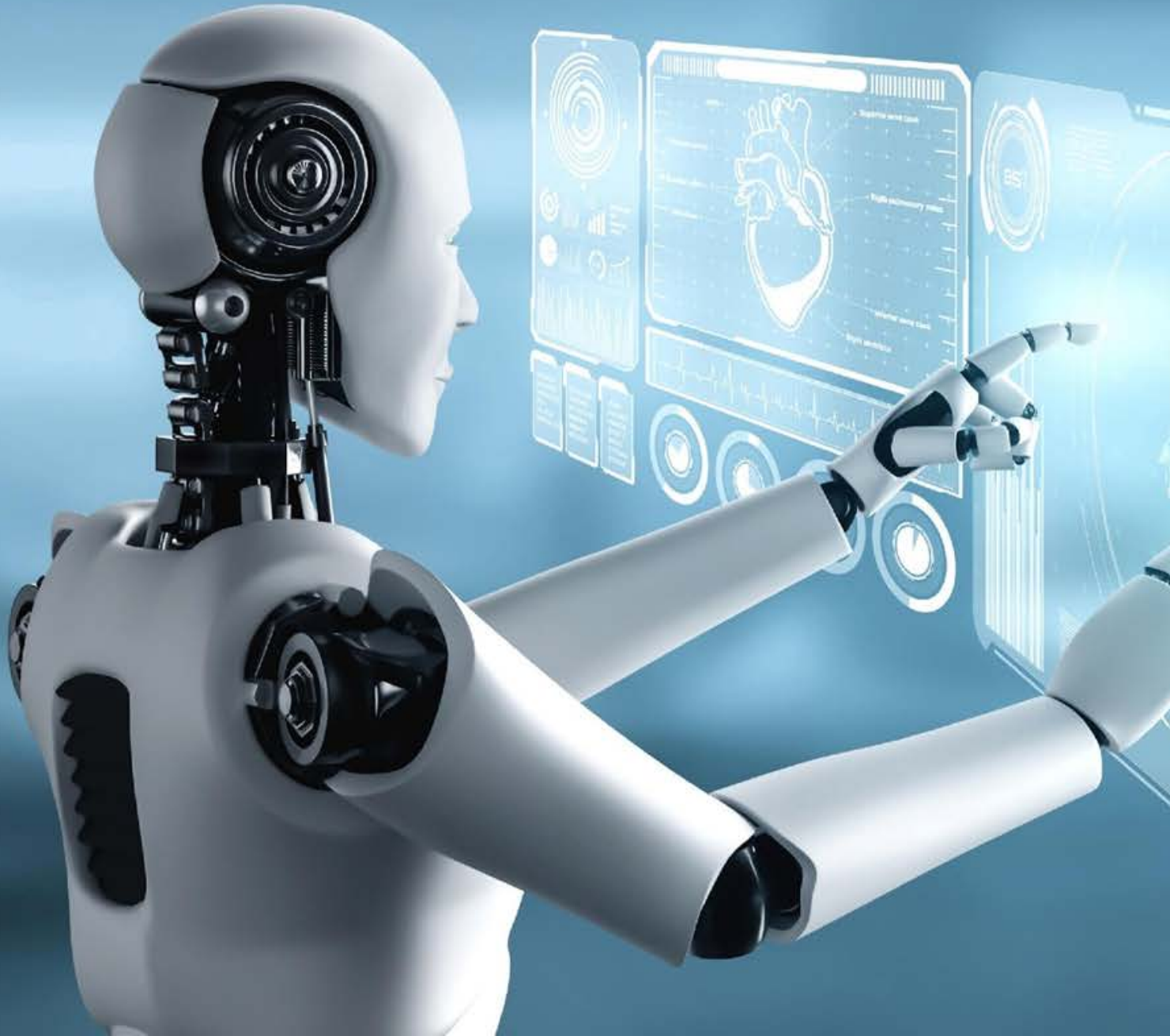
ODIN



Leveraging AI based technology to transform the future of health care delivery in Leading Hospitals in Europe



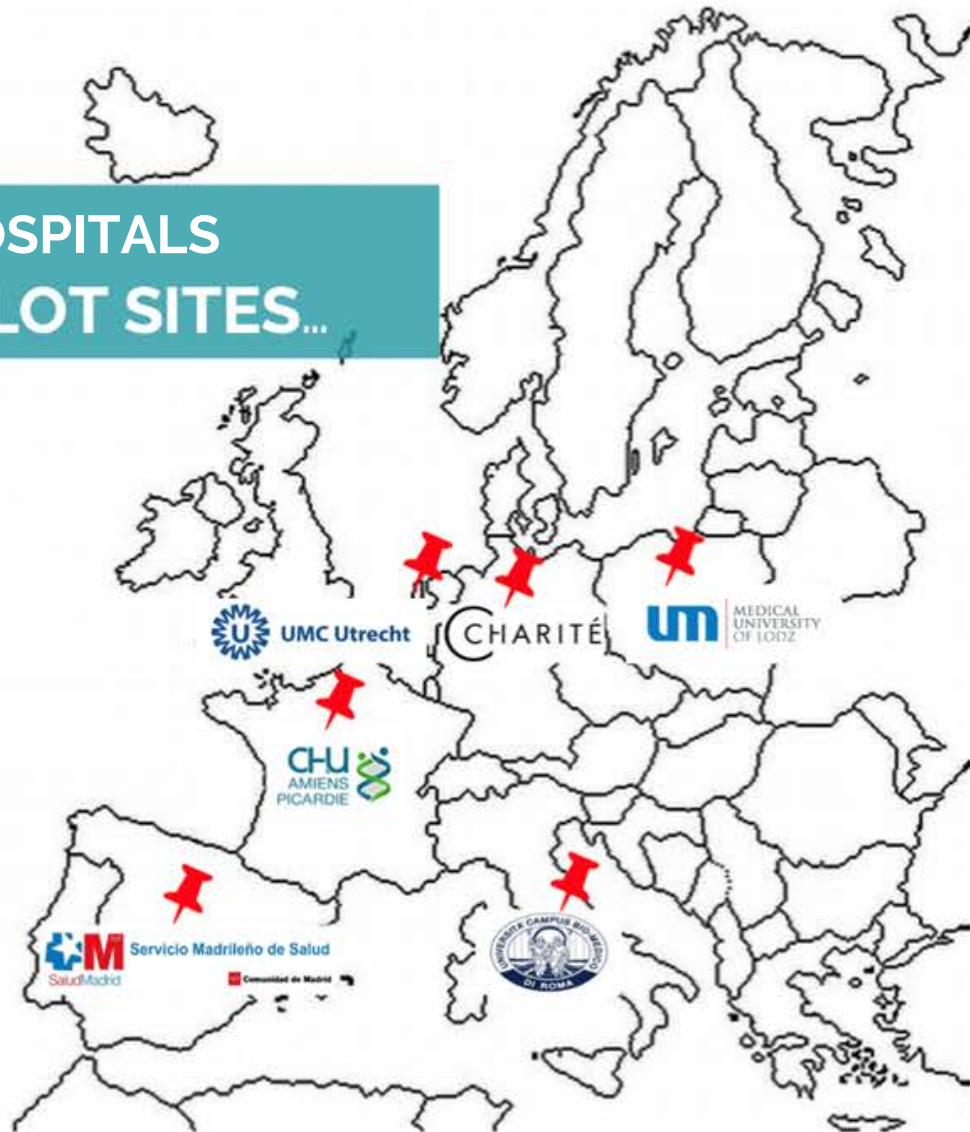
MAIN OBJECTIVES



- **Develop an AI-Robotics-IoT Assisted Platform Data strategy that enables the use of data** to deliver innovative products and services.
- The ultimate goal **is to reduce variability, increase confidence/experience, improve outcomes, reduce costs and contribute to the implementation of the European smart hospitals of the future.**

PILOT SITES AND USE CASES

5 HOSPITALS
PILOT SITES...



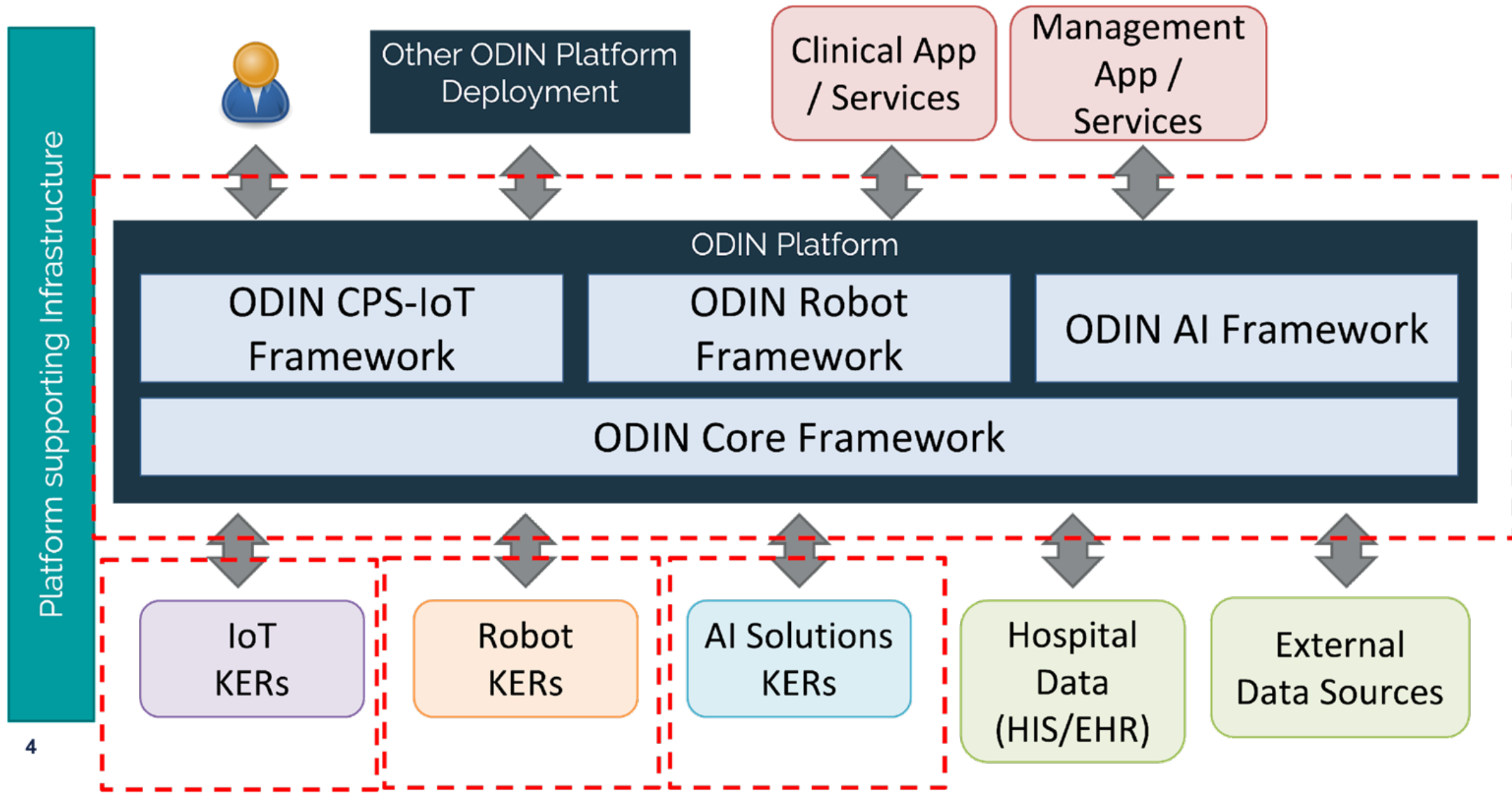
Working on 3 REFERENCE USE CASES...

- RUC A** - Health Services Management
- RUC B** - Devices and Facilities Management
- RUC C** - Disaster Preparedness

...With 7 SPECIFIC USE CASES

- **UC1** - Aided logistic support
- **UC2** - Clinical engineering, MD locations, real-time management
- **UC3** - AI based support system for diagnosis
- **UC4** - Clinical tasks and patient experience
- **UC5** - Automation of clinical workflows
- **UC6** - Inpatient remote rehabilitation
- **UC7** - Disaster preparedness

ODIN PLATFORM APPROACH



REFERENCE USE CASES + PILOTS

CHALLENGES WITH AI

Data Silos

Data for AI is not:

- Identified
- Linked
- Standardized
- Legally accessible

Change Management

- Transparency
- Training
- Explainability & Monitoring
- Bureocracy
- When all is said and done, technology is already outdated