



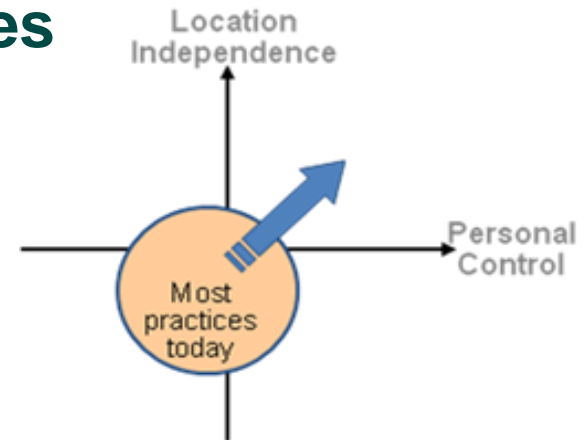
The Momentum Blueprint and TREAT, a Self-Assessment Tool Tested in Real Life

**Undine Knarvik (NST), Wenche Tangene, (SSHF)
Claus Duedal Pedersen, (RSD), Lise Kvistgaard, (RSD)**

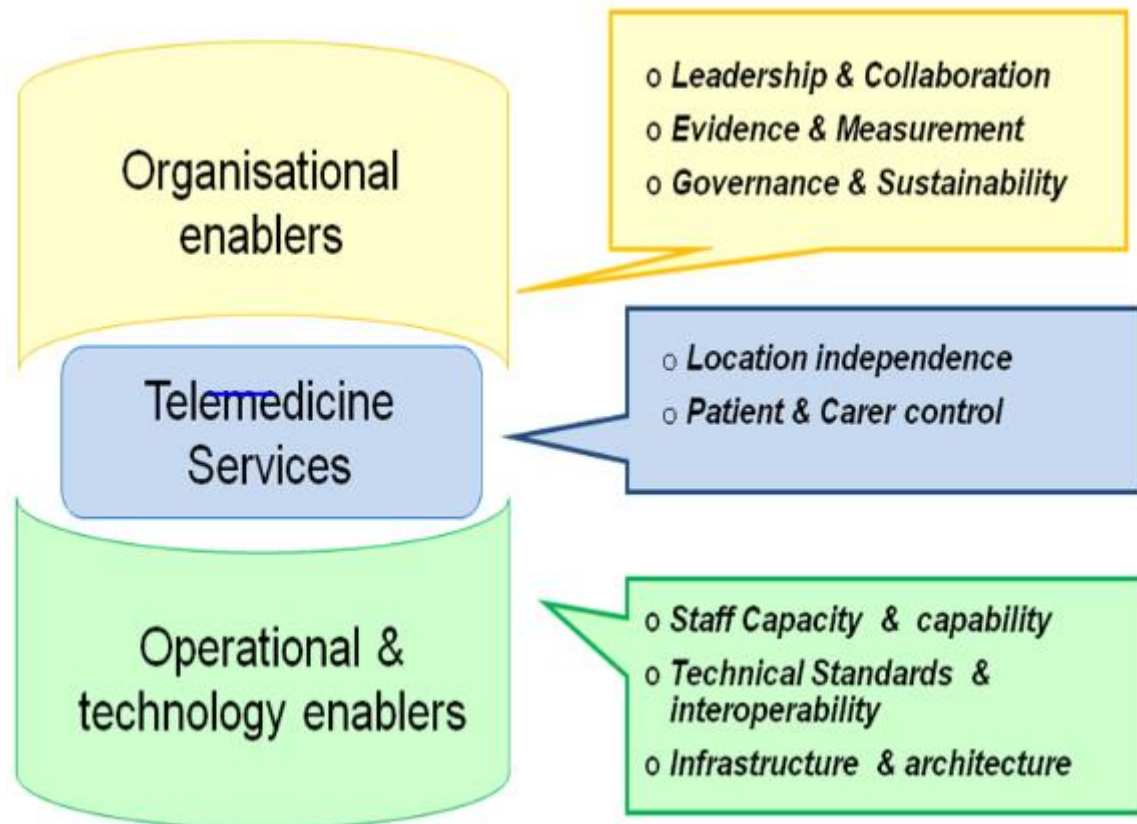
Introduction to the TREAT tool

The TREAT assessment is based on the key assumption that telemedicine solutions provide value for citizens, providers, and payers:

- They improve access to services
- They reduce costs
- They improve quality



Components of the TREAT tool

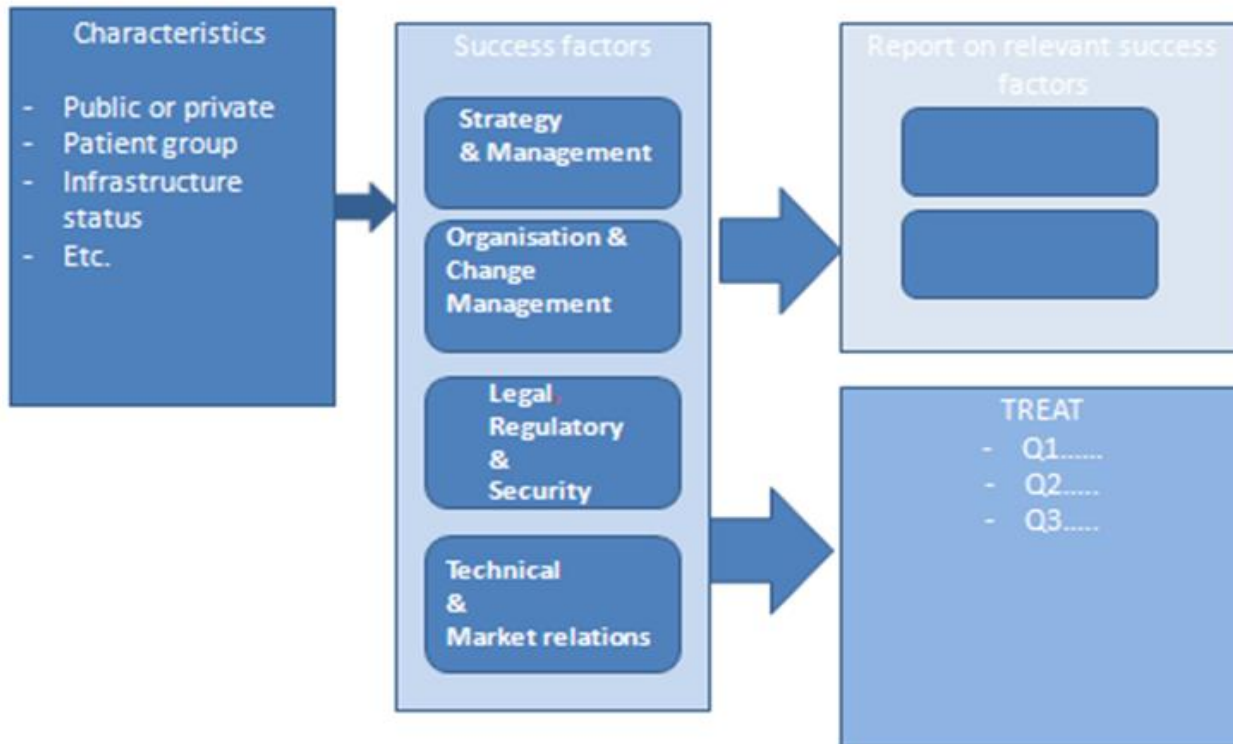


The online TREAT tool

- Pre-formatted questionnaire, 3-5 questions per concept
- Each section contains questions on baseline issues necessary for a telemedicine service, and a section on existing desirable tools which could be leveraged to develop a telemedicine programme in situations where the baseline is poorly developed
- In the online tool, each question is answered on a simple 1-5 scale where 1 = do not agree and 5 = fully agree



Adapting the TREAT tool for MOMENTUM



Adapting the TREAT tool for MOMENTUM

In order to use the TREAT tool in the MOMENTUM project, a new set of survey questions has been developed, based on the work of the four SIGs of MOMENTUM:

- Strategy and management.
- Organisation and management.
- Legal, regulatory and security issues.
- Technical and infrastructural issues.

Preparing the validation process

- For each CSF a number of questions were prepared to reveal whether the underlying conditions for the CSFs were fulfilled
- Due to a tight schedule, the questions were prepared in a parallel process with the finishing of the CSFs
- We did not discuss the order of the questions before releasing them

The MOMENTUM test phase in detail

Undertaking a validation exercise:

- the validation of the MOMENTUM guidelines, i.e., the 18 CSFs. The validation phase incorporated both the actual content of the CSFs and the potential for their use
- the validation of the wider MOMENTUM toolkit “package” (the TREAT method of a questionnaire supplemented by a workshop)
- writing up the experience in an outcome report

Purpose of the test phase

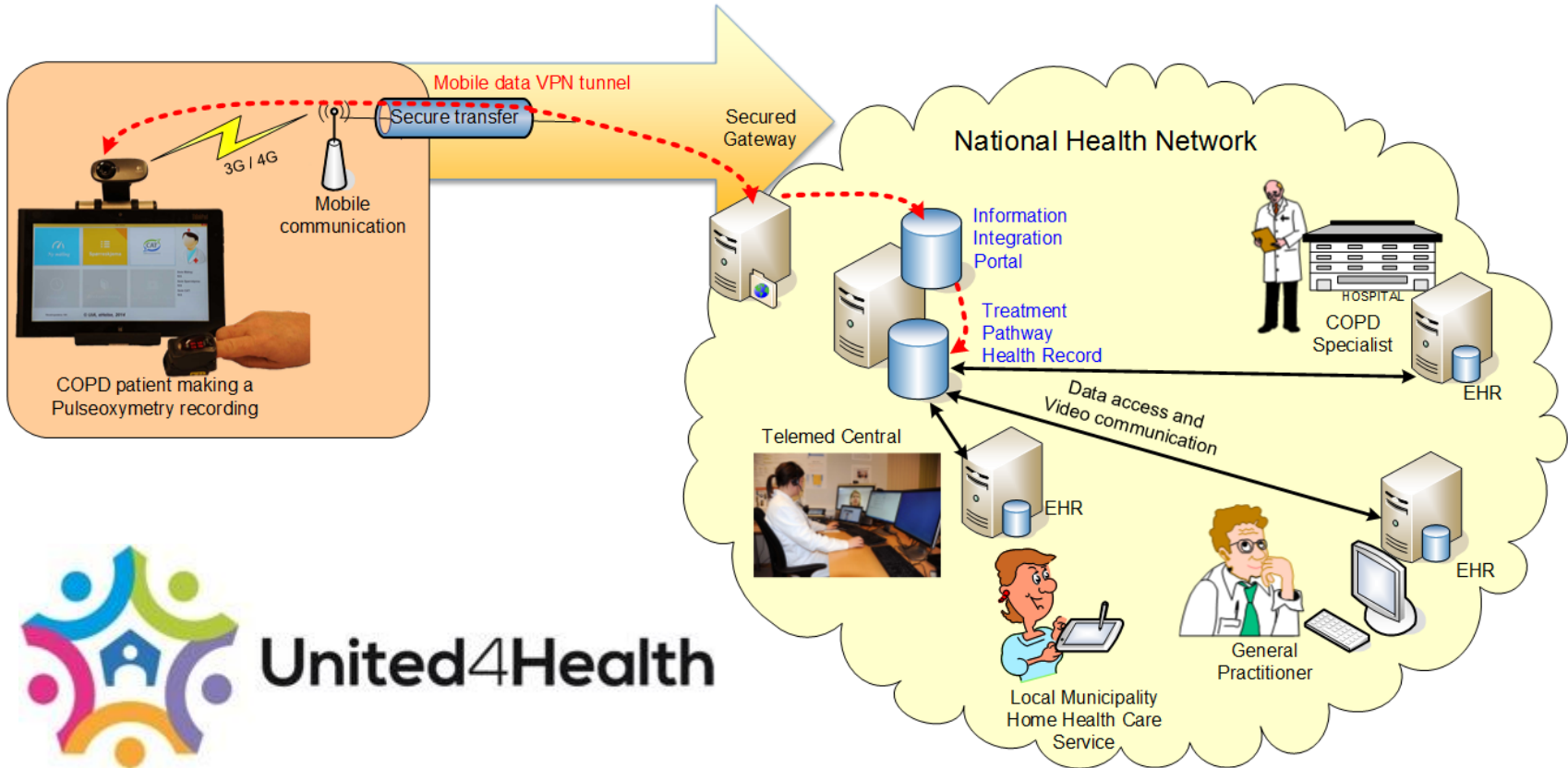
- **MOMENTUM's outcome is meant to act as a toolkit or toolbox**
- **The MOMENTUM toolkit should be independently usable on a telemedicine scale-up site**
- **The purpose of the test phase is to test whether the MOMENTUM toolkit is usable by a site on its own, i.e., can it be described as a self-managing tool**

From theory to practice



MIND THE GAP

UNiversal solutions in Telemedicine – United4Health South-Norway

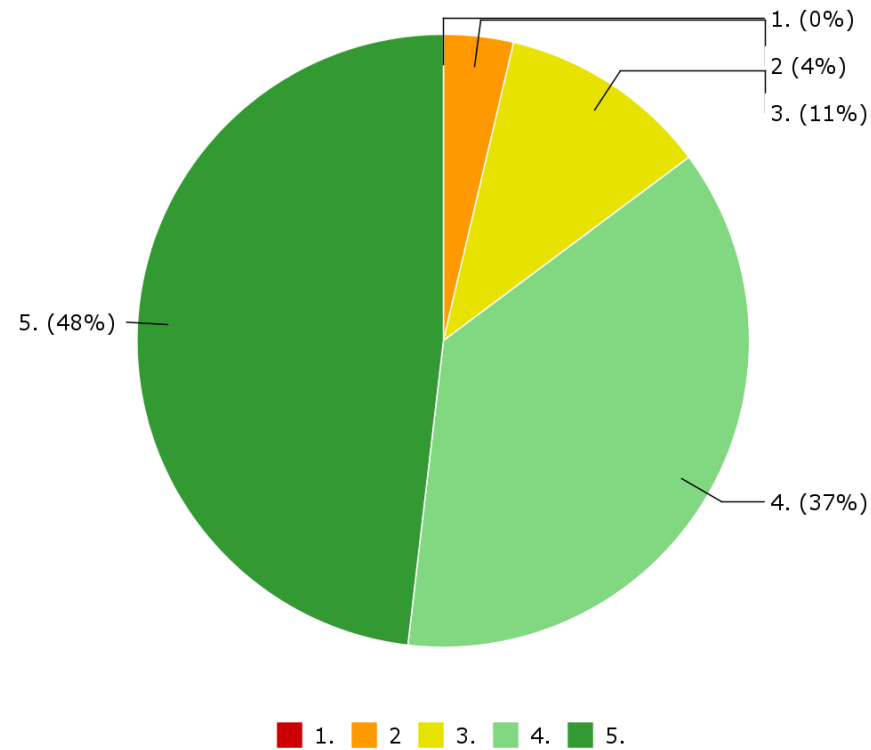


United4Health

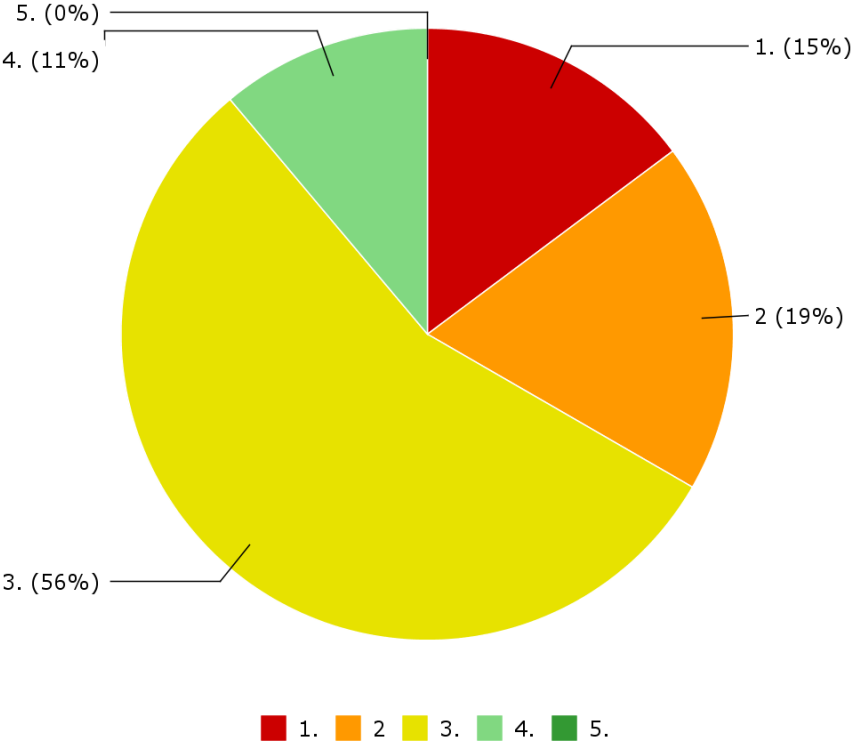
Traffic light



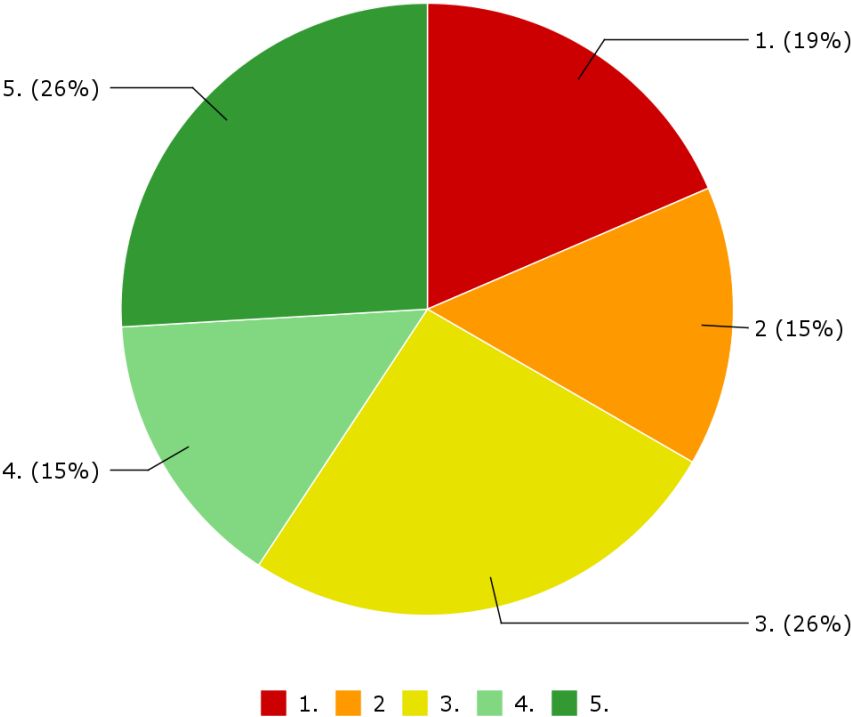
Secure leadership through a champion



Maintain good procurement processes



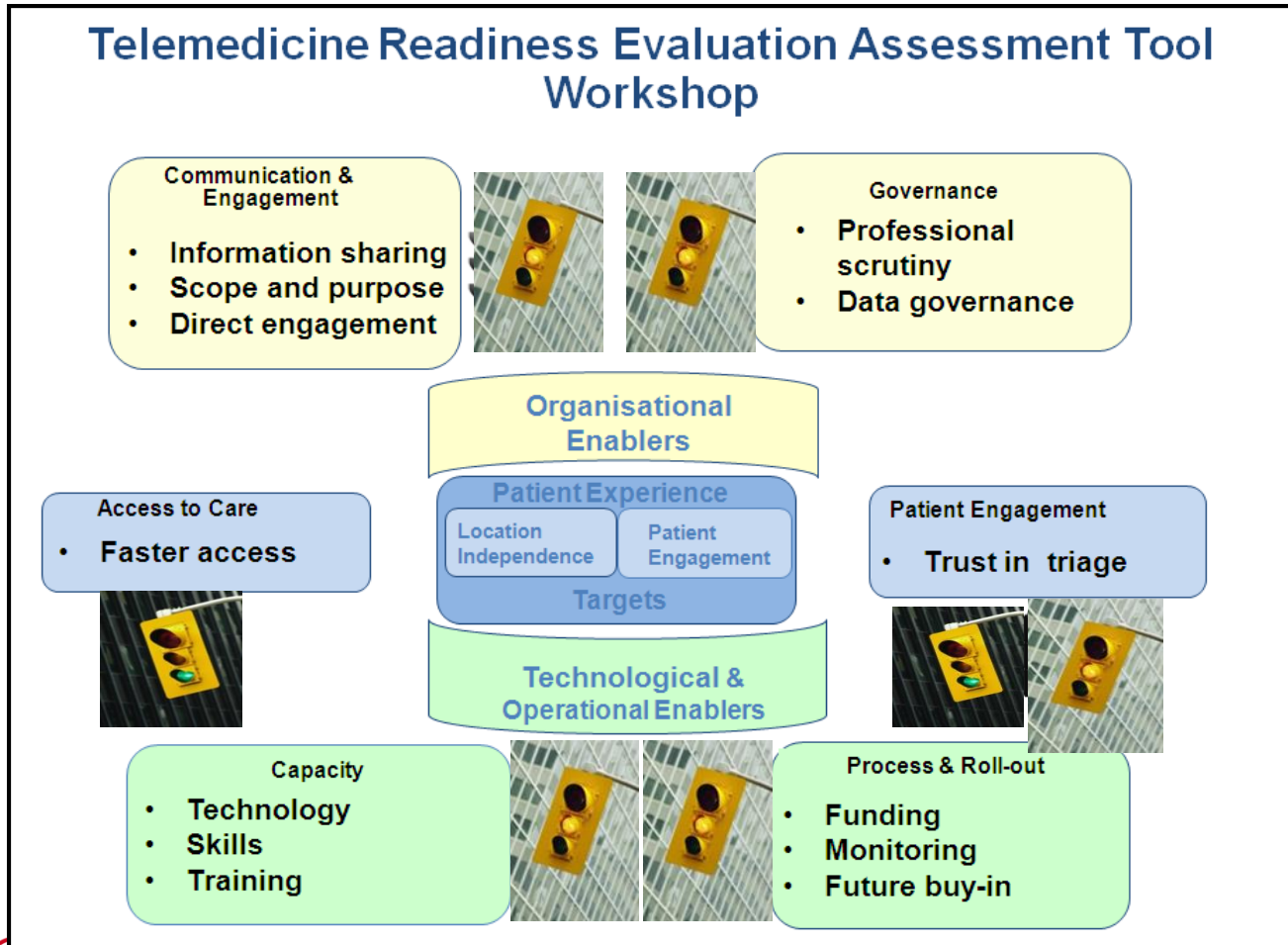
Involve legal and security experts



Workshop



Sør-Norge



The MOMENTUM test phase in detail

Posing validation questions: Four sets of questions were answered by the validation site.

- the usability of the MOMENTUM pre-workshop questionnaire;
- the ease-of-use of the MOMENTUM workshop
- the applicability of the MOMENTUM 18 CSFs to a scale-up site
- the value offered by the MOMENTUM “toolkit” to the telemedicine doers

Conclusions

- In the test phase the toolkit works well in an appropriate setting



Conclusions

- In the test phase the toolkit works well in an appropriate setting
- The toolkit can be a self-managing tool



Conclusions

- In the test phase the toolkit works well in an appropriate setting
- The toolkit can be a self-managing tool
- The toolkit cannot, however, function as an off-the-shelf tool applied directly. Some adaptations to the actual situation are necessary

